

waterpik®
waterflosser™

Congratulations!

You are now on your way
to better oral health!

✓ Register and Save

Register your product at waterpik.com/registration to receive over **\$50** in savings (includes **50%** off your next order of assorted tips + tip storage case).

✓ Write a Review

Creating innovative Waterpik® products that inspire better oral health is our passion. We invite you to leave a review by sharing your thoughts on the Cordless Water Flosser on waterpik.com or the retailer's website.

✓ We're Here to Help

We hope you are loving your new Cordless Water Flosser. If for any reason you are not satisfied or have any product questions, please contact our fast and friendly Customer Service Team based in Fort Collins, Colorado. The Cordless Water Flosser is backed by a 2-year manufacturer's warranty.

Call: 1-800-525-2774
Monday-Friday
7 am - 5 pm MST



Chat or E-mail
service@waterpik.com



**Quick Start
Guide Inside!**



Register and Save!

Save over \$50!

Register at **Waterpik.com/Registration** to receive exclusive discount code.

Offer includes
50% off
your next order
of assorted
tips + tip
storage case.



We'd Love to Hear from You!



Connect with Us
@Waterpik



Call: 1-800-525-2774
www.waterpik.com

Waterpik® 14 Day Challenge App



Make water flossing a habit! Try our new mobile App for the best water flossing experience.

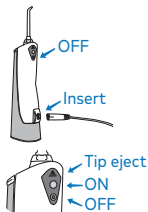


Quick Start Guide

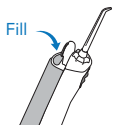
GETTING STARTED

1 Charge Unit For 24 Hours Prior To First Use.

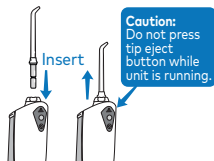
Turn power off by pressing OFF button. Plug power cord into outlet, and insert the charging cord into the unit.



2 Unplug charging cord from unit prior to filling with water and during use. Lift the flip top on reservoir and fill with lukewarm water. Refill as needed.



3 Press tip firmly into unit until it clicks into place. To remove tip, push the tip eject button.



WATER FLOSS

4 Turn power ON.

Lean over sink. Close lips enough to prevent splashing.

Keep unit upright during use to ensure continuous water flow.



5 Aim water at the gumline at a 90 degree angle. Follow the gumline and pause briefly between teeth.



NEED HELP?

Visit Waterpik.com/WelcomeWF

To watch a How To Video and find additional product support

Call Us! 1-800-525-2774

TO AVOID MESS: KEEP TIP IN MOUTH WHILE UNIT IS ON.