



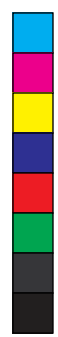
## Smart Lock User Manual



# YF 1153MHK

Part of ASSA ABLOY

\*The functions and design of this product will be updated to enhance quality without prior notice.



## Table of Contents

Product Description	.....	P 01
Smart Lock Diagram	.....	P 02
Door Lock Functions and Operations	.....	P 03
- System Initialization Status	.....	P 03
- Unlock	.....	P 03
- Function Key	.....	P 03
- Installation and Debugging	.....	P 04
- Administrator Settings	.....	P 04
- Remote Management	.....	P 06
- System Settings	.....	P 07
- System Query	.....	P 08
WeChat Onetime Password	.....	P 09
Tuya APP Operation Instructions	.....	P 10
Maintenance and Management	.....	P 12
After-Sales Service	.....	P 12
Warranty Card	.....	P 13

## Product Description

YF 1153MHK is advanced smart door lock that uses a fully automatic locking mechanism.

- It can use facial recognition, palm vein, fingerprint, key card, password, key, WeChat onetime password, and APP remote unlocking;
- Multiple unlocking modes are available, enhancing security levels;
- Combination unlocking, dual functionality, providing greater security for lock usage;
- Equipped with anti-peeping password feature;
- Equipped with unlocking record query function, allowing you to keep track of the lock's usage;
- The lock module has been treated for waterproofing, moisture-proofing, and mold-proofing, and has undergone tests for high and low temperatures, vibration, aging, etc., to adapt to harsh environments.

## Technical Parameters

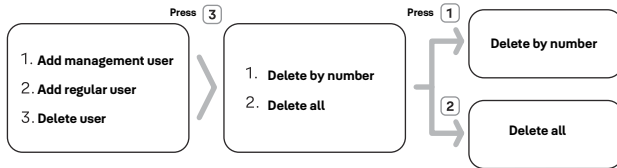
Content	Design Indicators
Power supply	DC7.4V Lithium Battery
Low battery warning	< DC7.0V
Emergency power supply	DC5V (Type-C )
Static current	< 120 $\mu$ A (Average)
Dynamic current	< 500mA (Average)
Operating temperature	-10 $^{\circ}$ C ~ 60 $^{\circ}$ C
Working humidity	45%RH ~ 90%RH
Face capacity	Face, Palm vein 100 Fingerprint 50 pcs, Administrator 9 pcs, Other user no limit (Total 200pcs)
Palm vein capacity	
Fingerprint capacity	
Password capacity	
Key card capacity	Other user no limit (Total 200pcs)
Anti-static capability	Air discharge $> \pm 15KV$ ; Contact discharge $> \pm 8KV$
Fingerprint false rejection rate	< 0.1%
Fingerprint false acceptance rate	< 0.004%
Face false acceptance rate	< 0.001%
Face recognition speed	< 1 S

\*The images in this manual are for reference only; please refer to the actual product.





### 3) Delete user



#### ● Delete by number

- > In the user deletion interface, press the number key **1**, the system voice prompts 'Please enter the number.'
- > Enter the user number to be deleted, press the key **#** to confirm, the system voice prompts 'Operation successful', the system will delete the user information under that number.

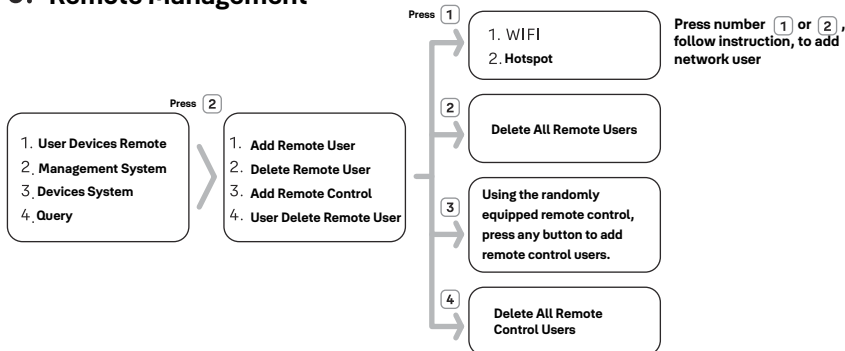
**Notice** In this interface, the administrator of the currently logged-in device cannot be deleted.

#### ● Delete all users

- In the user deletion interface, press the number key **3**, then press the key **#** to confirm, to execute the operation to delete all users.

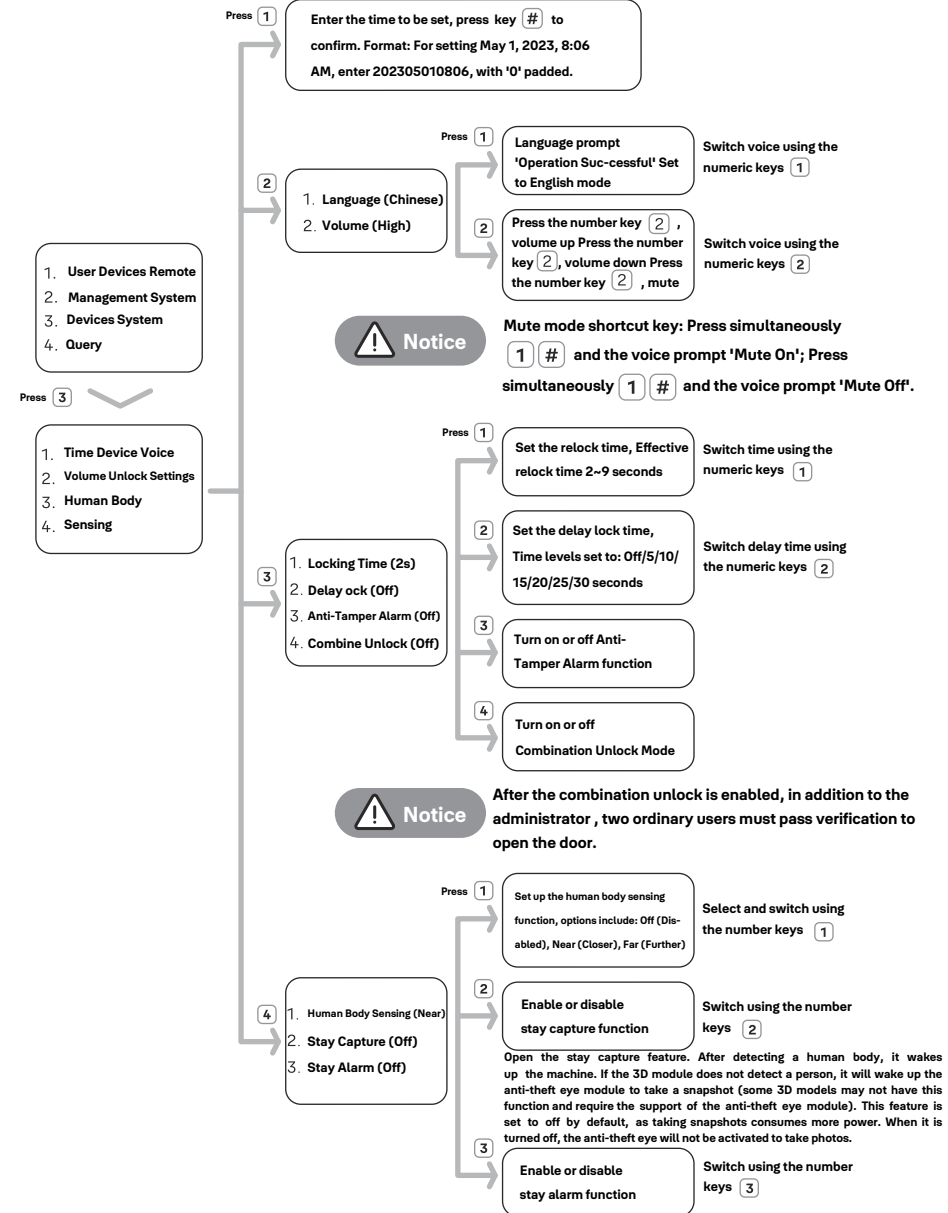
**Notice** In this interface, the administrator of the currently logged-in device cannot be deleted.

## 6. Remote Management



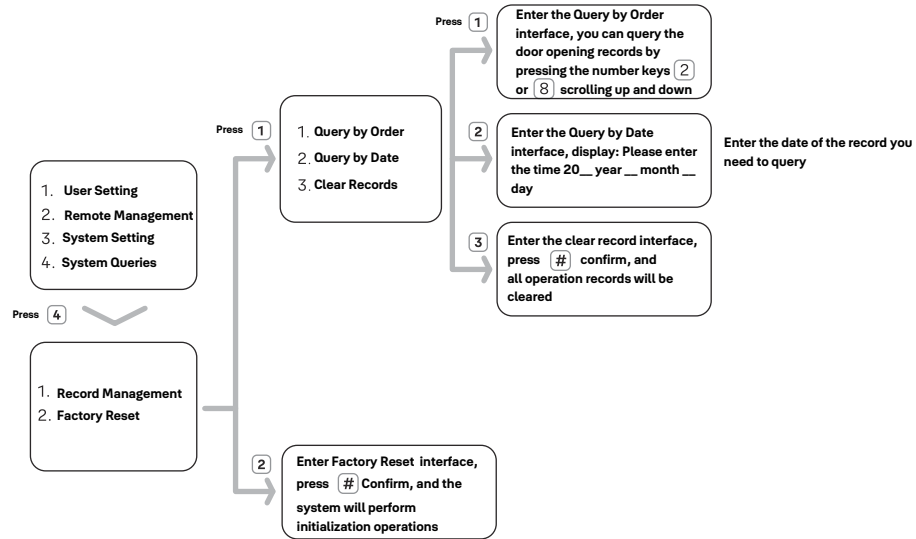
**Notice** For those not randomly equipped with a remote control, the system still reserves the functional interface for remote users.

## 7. System Settings

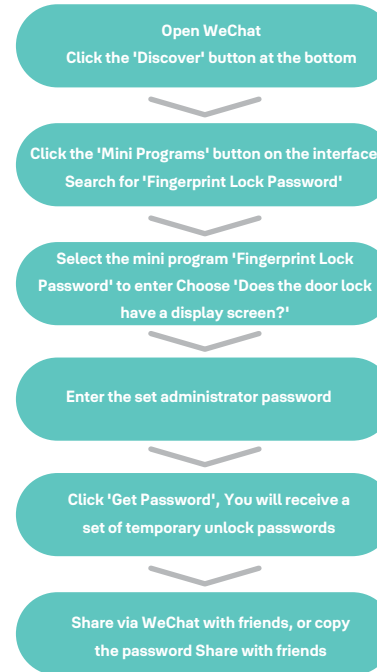


After the stay alarm feature is activated, if the system encounters errors three times, it will trigger an alarm notification. If the errors accumulate to five times, the system will be locked for 90 seconds, during which no user can unlock it. After the stay alarm is turned off, the system's error alert will also be deactivated.

## 8. System Query



## WeChat Onetime password



Scan WeChat QR Code  
Share the key to unlock



### Notice

- You need to set the administrator password on the door lock first; user passwords do not have WeChat unlocking permissions; Please pay attention to the door lock time, it needs to be consistent with the mobile phone; If the door lock time is incorrect, you can choose 'Change Time', enter the door lock time to ensure successful unlocking;
- You need to confirm and select whether the door lock has a display screen; if you choose incorrectly, the generated unlocking password will be invalid.

(Password is valid for 10 minutes and can only unlock once)



## Tuya APP Operation Instructions

### Step 1

Scan to Download the Tuya App



Download Tuya APP

### Step 2

Open the Tuya App



1. Click Add Device



2. Click Camera /Lock



3. Click Door Lock (Wi-Fi)



4. Select Wi-Fi Hotspot

Enter Password

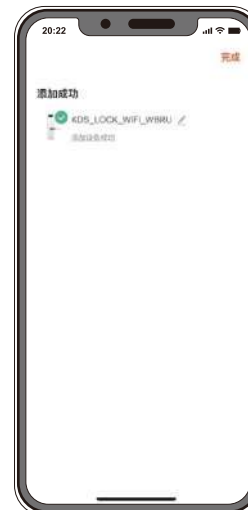
Router network must 2.4G



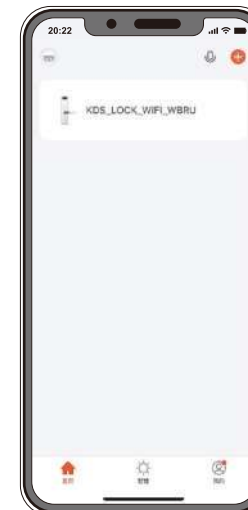
5. Click Next



6. Waiting for network connection to succeed



7. Connection successful, click Finish



8. Network connection completed

## Maintenance and Management



### 1. Daily Maintenance of Smart Locks

The surface of the door lock needs regular maintenance to keep it looking new. Use a soft, clean dry cloth to wipe the surface, and avoid using water, alcohol, or acidic chemicals for cleaning. Regularly have a professional apply lubricant to the moving parts of the door lock and replace any severely worn components.



### 2. Usage of USB Emergency Power Supply

When the door lock's power is too low to unlock, you can use an external emergency power supply to unlock it. Please remember to charge the battery immediately after unlocking (the USB emergency power supply is for emergency use only; do not use it when the battery has power).



### 3. Deformation of Door Body Caused by External Force

If the door is deformed, it can cause excessive friction when the latch inserts into the door strike plate, preventing it from fully extending or even popping out. In this case, the position of the door strike plate should be adjusted.

## After-Sales Service



### 1. Product Quality Commitment

All products launched by our company have passed various tests conducted by our professional personnel. If there are usage issues caused by product quality during use or installation, our company will provide solutions.

### 2. The warranty period for the smart lock is one year

### 3. During the warranty period, if any of the following situations occur, it must be treated as a chargeable repair:

- ① Failures and damages caused by improper self-operation and self-repair;
- ② Failures and damages caused by transportation, movement, and drops after purchase;
- ③ Failures and damages caused by other unavoidable external factors;
- ④ Damage caused by using a power supply other than specified, due to voltage;
- ⑤ Damage occurring during the free warranty period, but caused by improper use due to human factors or force majeure.

### 4. All products are eligible for lifetime maintenance service after sale

## Warranty Card

<b>Model No</b>			
<b>Installation Date</b>		<b>Purchase Date</b>	
<b>Mobile No</b>		<b>Name</b>	
<b>Address</b>			
<b>Dealer</b>			

**Thank you for using our product:**  
**In the case of repairs during the warranty period, please present this warranty card along with the invoice or receipt. This warranty card will not be reissued if lost, so please keep it in a safe place.**  
**If you encounter any issues with the product you purchased, please return it to your dealer or contact us directly.**

**Problems:**